

Ethereum (ETH)

Deposit and withdraw in Ethereum, one of the most popular cryptocurrencies.



Processing time

Deposits: Funds available as soon as the transaction is confirmed

Withdrawals: Subject to internal checks



Min deposit

No minimum



Min withdrawal

Equivalent to 5 USD

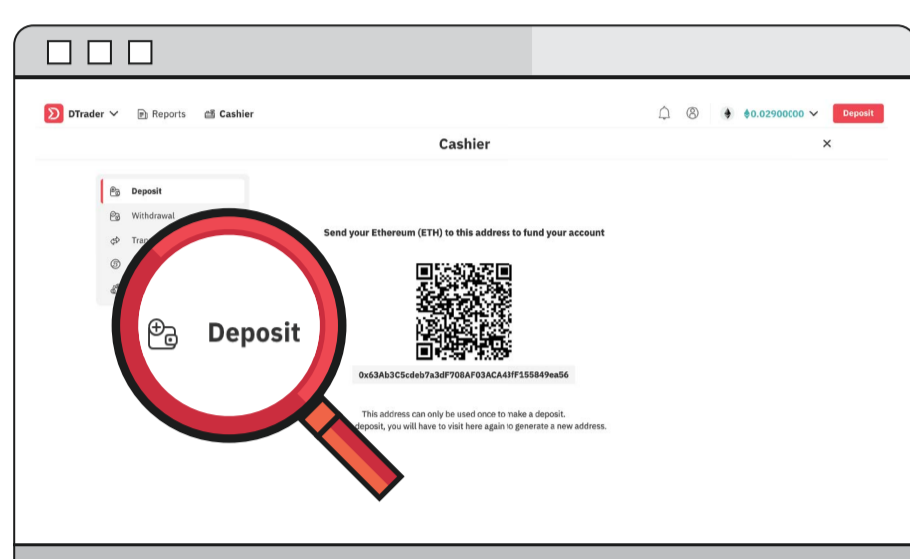
How to make a deposit

Step 1 Log in to your Deriv ETH account and click **Cashier**.

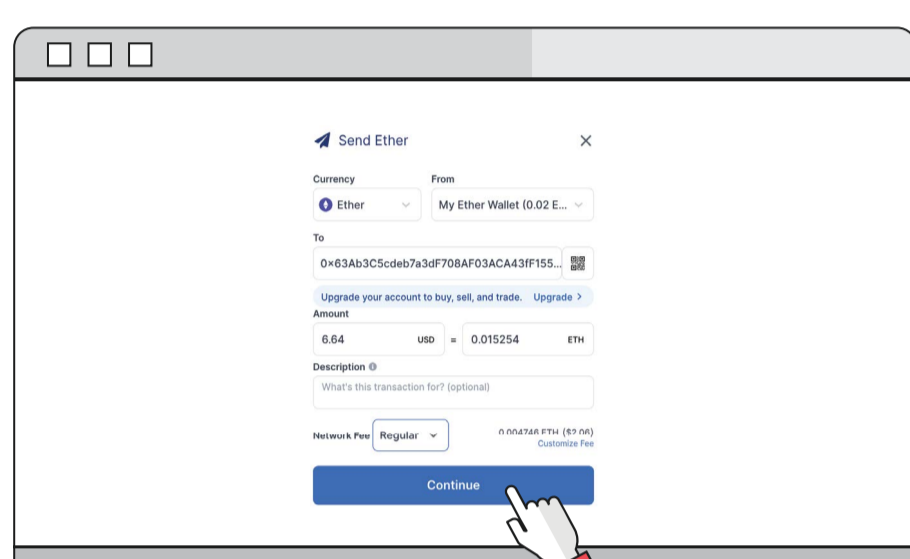


Click **Deposit** and copy the address on the screen.

Step 2

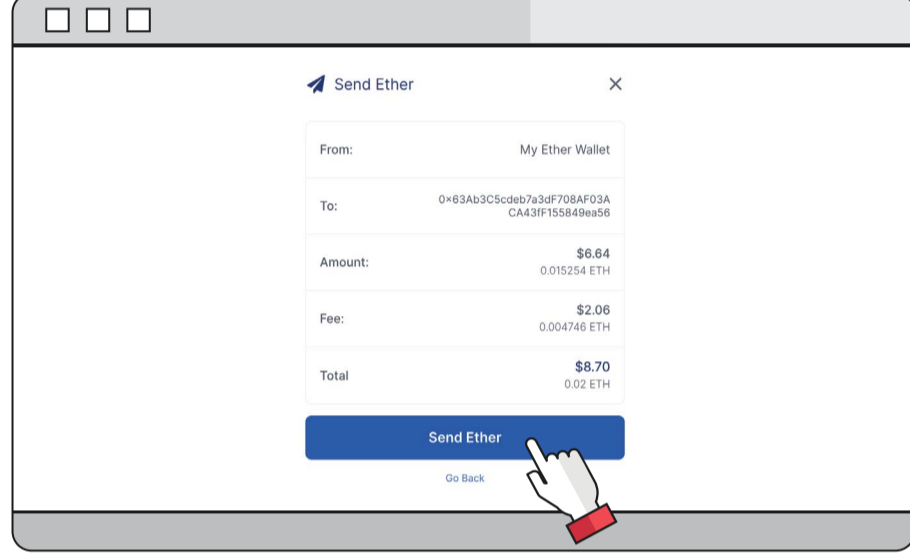


Step 3 Paste the address from Step 2 into your crypto wallet. Then, click **Continue**.

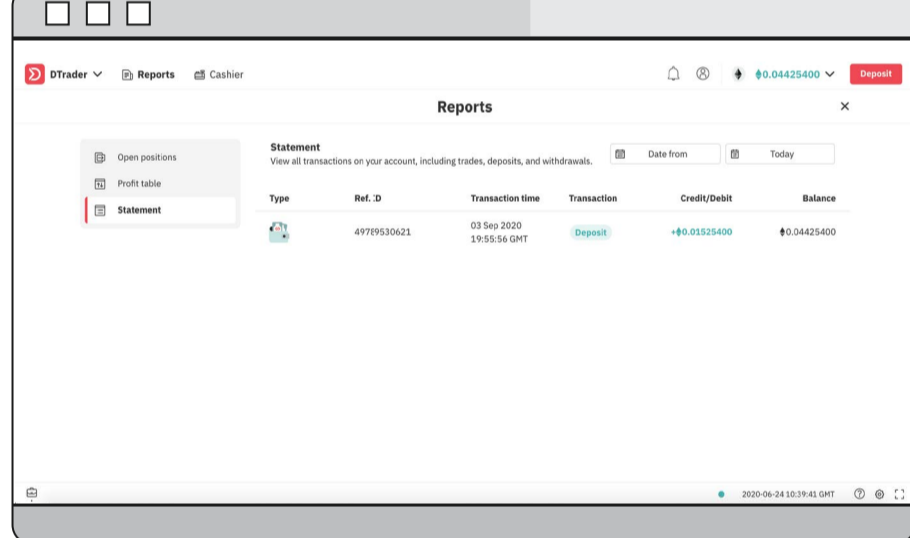


Check your payment details and click **Send Ether**.

Step 4

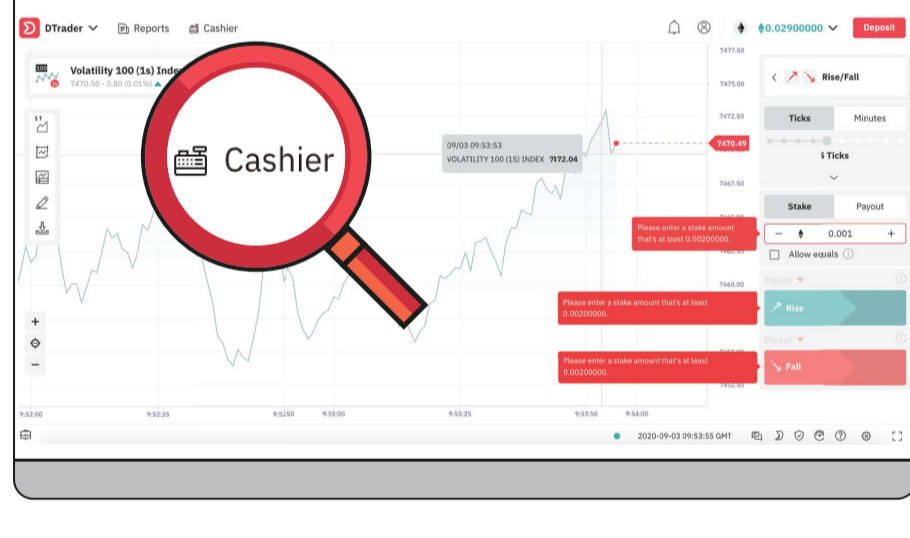


Step 5 As soon as your transaction is confirmed, your funds will be available in your Deriv ETH account. You will be able to see it in your statement.



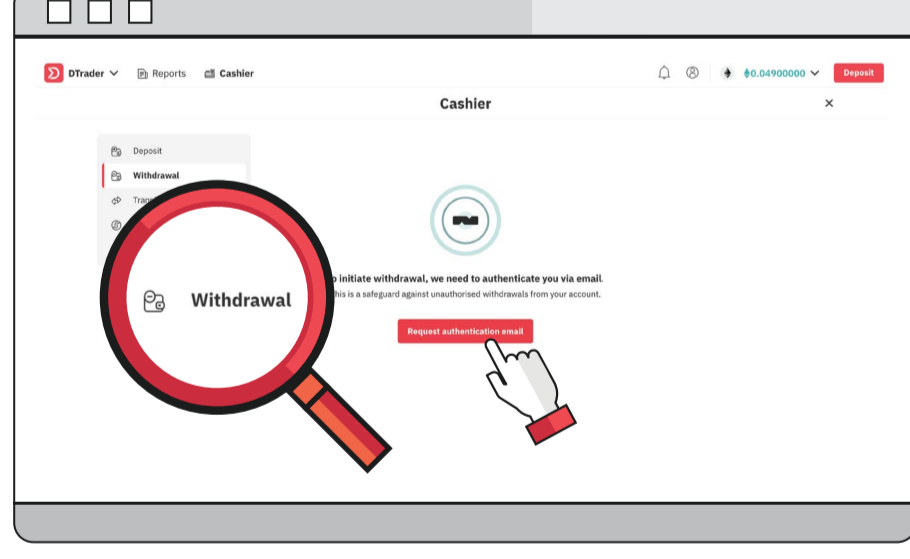
How to make a withdrawal

Step 1 Log in to your Deriv ETH account and click **Cashier**.

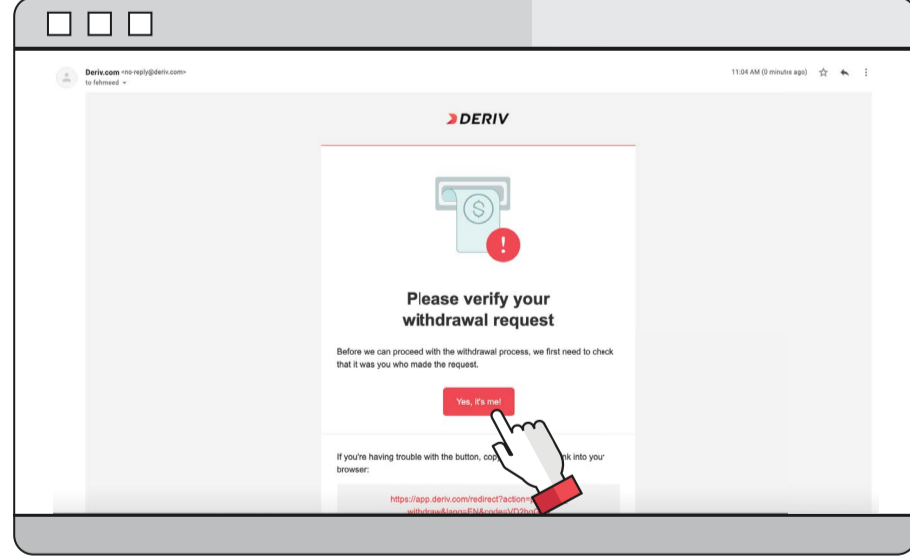


Click **Withdrawal**, and then click **Request authentication email**.

Step 2

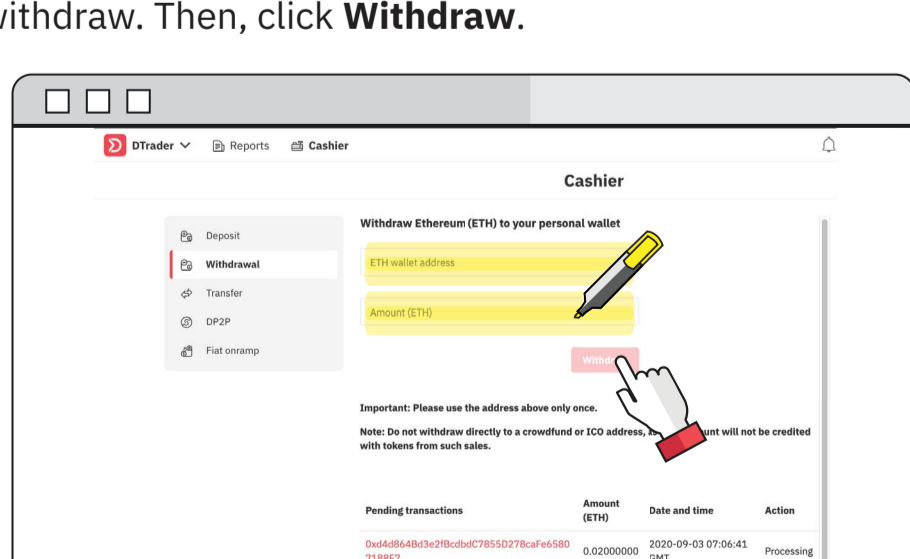


Step 3 We'll send you a verification email. In the email, click **Yes, it's me!**

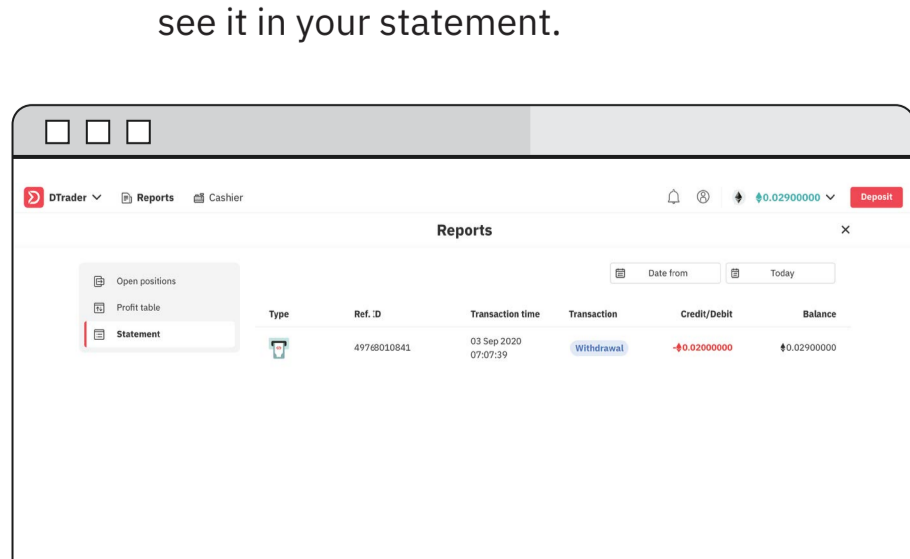


Copy the address of your ETH wallet and paste it here along with the amount you want to withdraw. Then, click **Withdraw**.

Step 4



Step 5 You will see the transaction as pending. Processing is subject to internal checks. Once it is successful, your funds will be available in your ETH wallet, and you'll be able to see it in your statement.



Need help? [Chat with us.](#)

Processing times and limits are indicative. They may differ from what is shown here, depending on the queue or for reasons outside of our control.